

FLEET GENIUS™

MONITOR, MEASURE, MANAGE YOUR FLEET



utilization



diagnostics



fuel economy



scheduling



maintenance



driver behavior

Diagnostics-based Fleet Management

Fleet Genius™ enables fleet managers to monitor, measure and monitor their fleet vehicle's performance and drivers behavior for up to **60% less cost than legacy GPS** fleet management systems.

Fleet Genius provides:

- ✓ More accurate and richer management data than GPS
- ✓ OBD-2 system diagnostics for improved maintenance
 - ✓ Free wireless operations

and much more

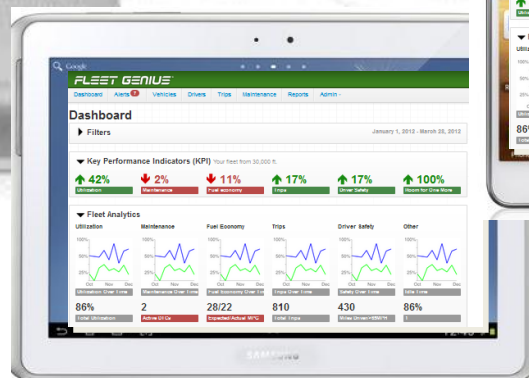
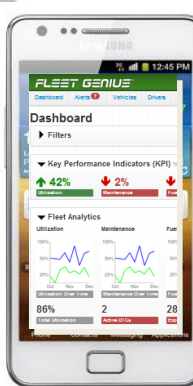
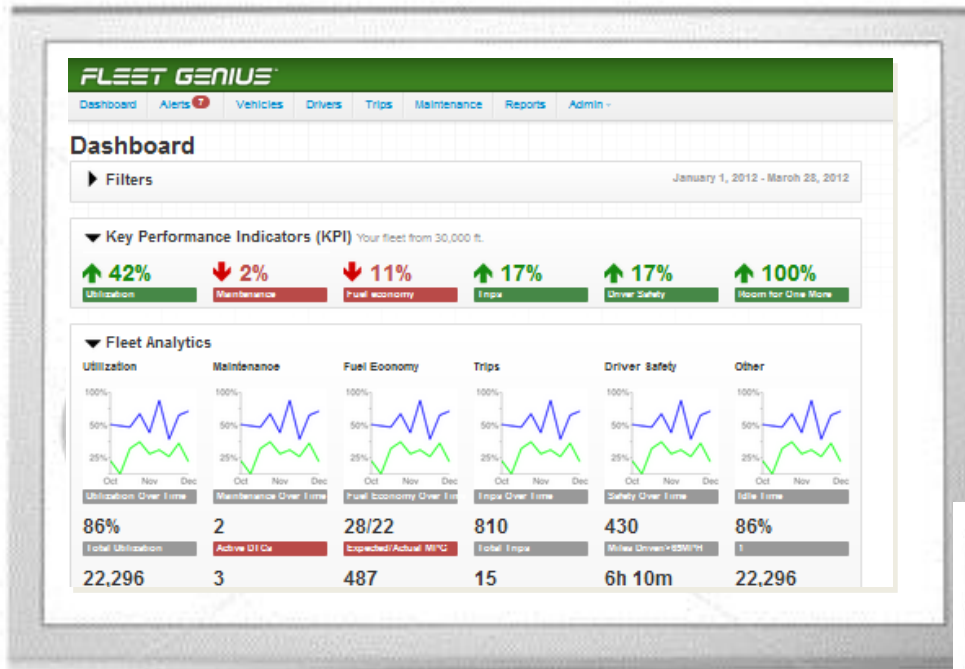
VHM™ Genius Module



- Plug-and-play fleet management computer
- OBD-2 monitor / analyzer
- Wireless
- Data logging (2k unique trips)
- Trip-by-trip performance
- DTC decodes
- Fuel economy analysis

Fleet Genius™ Pro

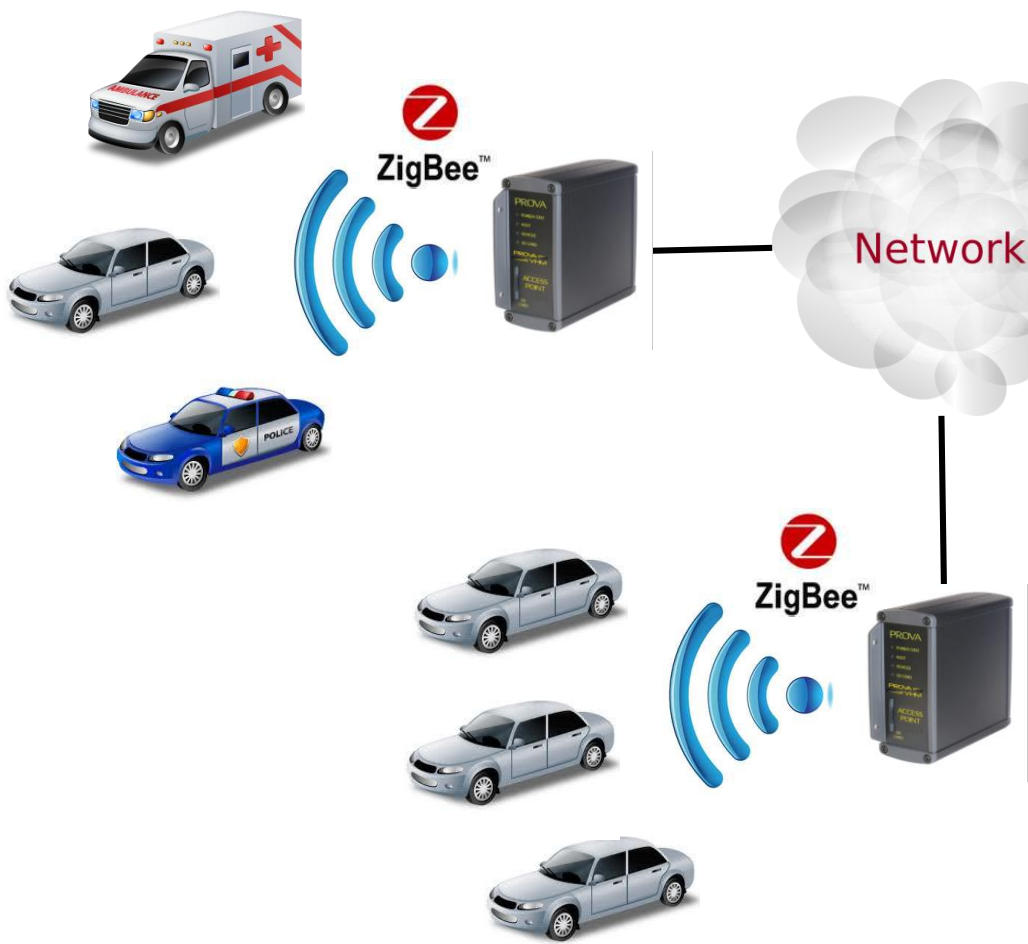
fleet management application



FLEET GENIUS®

- Intuitive & Easy to Use
- KPI Dashboard
- Alerts via email
- Fleet analytics
- Maintenance management
- DTC decodes
- Driver behavior monitoring
- Fuel economy tracking
- Cloud-based
- PC, Tablet, Smartphone browser accessible

Local Wireless Architecture



FLEET GENIUS

Dashboard Alerts Vehicles Drivers Trips Maintenance Reports Admin

Dashboard

January 1, 2012 - March 28, 2012

Filters

Key Performance Indicators (KPI) Your fleet from 30,000 ft.

- Utilization: ↑ 42%
- Maintenance: ↓ 2%
- Fuel economy: ↓ 11%
- Trips: ↑ 17%
- Driver Safety: ↑ 17%
- Score for One More: ↑ 100%

Fleet Analytics

Utilization	Maintenance	Fuel Economy	Trips	Driver Safety	Other
86%	2	28/22	810	430	86%
Total Utilization	Active OI Car	Expected/Actual MPG	Total Trips	Miles Driven/5280/MI	1
22,296	3	487	15	6h 10m	2,296
Mile Driven	Fuel Due Maintenance	Est. Cost	Average Trip Distance	Time Driven/5280/MI	2
76	Due in 30 Days	\$1,675	76	7/12%	76
Hours in Use			Average Impairments	Drivers with Alerts	

Outstanding Alerts Total Alerts: 7

- Car 108 : Crown Victoria
Registration expiration in > 30 days (due April 12, 2012) 06/05/12 05:12 AM
- Car 19 : Camaro z38
New vehicle added. 06/05/12 05:12 AM
- Driver 8 : John Collins
SPEEDING > 75 in Car 19 : Camaro z38 06/05/12 05:12 AM
- Car 108 : Crown Victoria
Fuel efficiency < 10 mpg 06/05/12 05:12 AM
- Car 108 : Crown Victoria
Emissions expiration in < 30 days (due April 12, 2012) 06/05/12 05:12 AM
- Car 108 : Crown Victoria
Fast due for Oil Change - 40 miles 06/05/12 05:12 AM
- Car 4 : Ford Diplomat

System Features

Vehicle Data

- Track every trips with mileage, date/time, duration
- Driver behavior monitoring with speed, acceleration, deceleration, RPM and throttle
- Vehicle performance including fuel economy and FE trends
- Professional diagnostics:
 - DTC reporting and decodes
 - emissions sensors status
 - engine performance data
- Tracks maintenance schedules and enables remote performance analysis
 - Negative fuel economy trends
 - Intermittent DTCs
 - Coolant temperature tracking

System Features

Driver Data

- Track every trips with mileage, date/time, duration
- Driver behavior monitoring
 - Max and average speed
 - Max and average acceleration
 - Max and average deceleration
 - Max and average RPM and throttle
 - Time spent in each speed band
 - Time spent in speed bands > 65mph
- Vehicle performance including fuel economy and FE trends
 - Fuel used by speed band

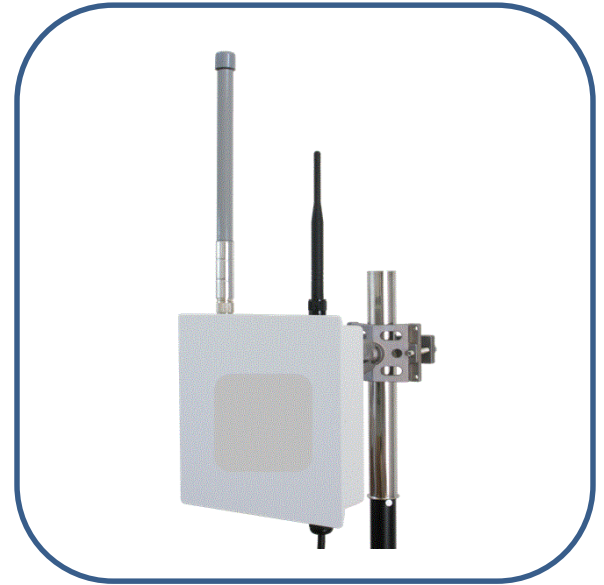
System Devices



OBD-2 Vehicle
Health Monitor



Indoor Drive-by
Access Point



Outdoor Drive-by
Access Point

Fleet Manager in-a-Box™



- All-in-one bundled solutions
- SME focused
- Includes
 - VHM Genius Modules
 - Wireless Access Points
- Connects to Fleet Genius Pro cloud servers
- Connects to partner applications
- Wireless

Fleet Genius Pro Pricing

Fleet Genius	SME 5	SME 10	SME 25	PRO 50	PRO 100
Monthly subscription	\$29	\$59	\$149	\$299	\$599
VHMs	5	10	25	50	100
User Logins	1	2	4	6	10
Add VHM/mo	\$5.95	\$5.95	\$5.95	\$5.95	\$5.95
Add'l User logins/mo	\$12.95	\$12.95	\$12.95	\$12.95	\$12.95

Compare with GPS Systems for 50 units @ \$35/month

Fleet Genius Annual fee for 50 users **\$3,588**

Legacy GPS System Annual Fee for 50 users **\$21,000**

Fleet Genius Annual Savings \$17,412/annum

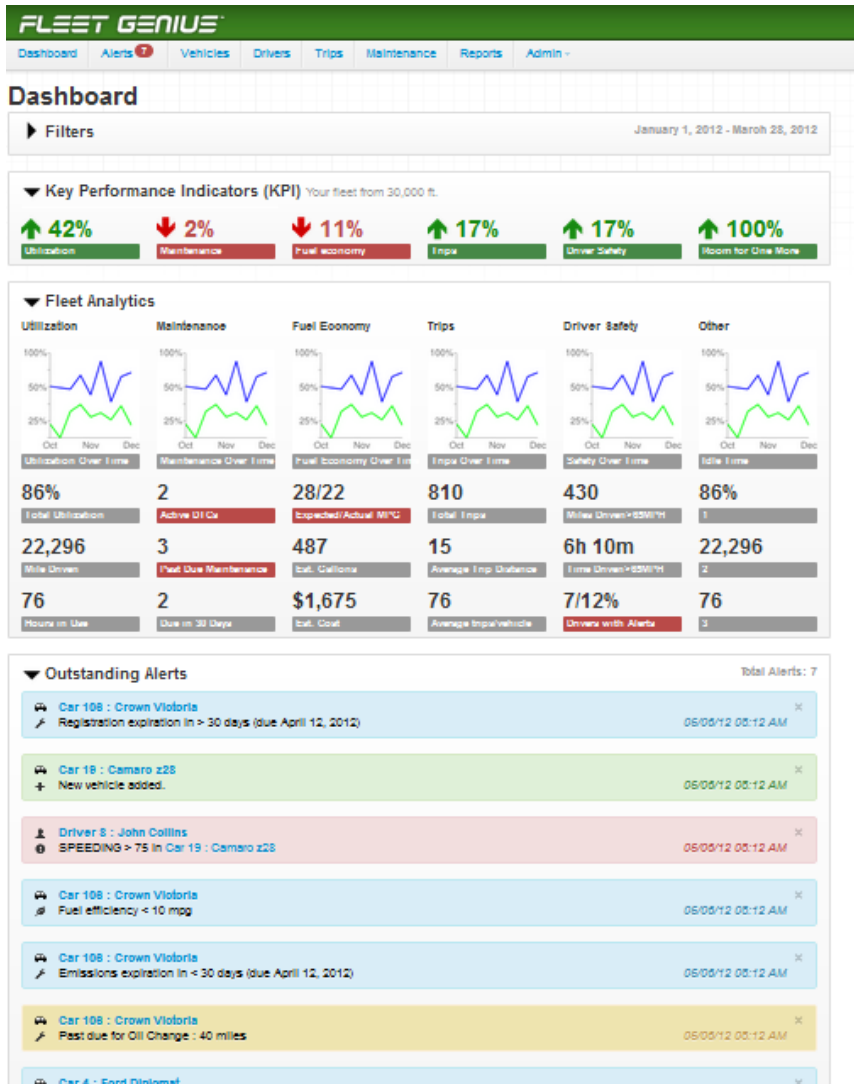
Fleet Manager in-a-Box Pricing*



	SME 5	SME 10	SME 25	PRO 50	PRO 100
System Price MSRP	\$1,695	\$3,040	\$7,075	\$13,800	\$27,250
VHM Modules	5	10	25	50	100
APs	1	1	1	2	4

* Lease financing may be available to qualified customers

Opportunities for Fleet Service Organizations



- New revenues from fleet maintenance from sales of hardware and subscriptions
- Customers tied in via Fleet Genius reporting to your customer care centers
- Capture maintenance alerts to offer more complete coverage
- Hot spot uploads bring customers back to your sites
- Integrated, roll-over base-bar advertising

FLEET GENIUS™



FLEET GENIUS® PRO AND FLEET MANAGER IN-A-BOX™

WWW.FLEET-GENIUS.COM

888-535-2704

PROVA SYSTEMS
10 ENTERPRISE DRIVE
CARBONDALE PA 18407